



CLIVEPEARCE
Now you're moving

4 Bedrooms

House - Detached

Asking Price

£585,000

Located in

Truro



www.clivepearceproperty.com



Wheal Jane Meadows

Truro | Cornwall | TR3 6EN



A beautifully presented and significantly upgraded, extended four bedroom detached house with front and rear gardens and an integral garage. Excellent location and walkable to the village centre, primary school, Richard Lander secondary school, Truro College, Treliske Hospital and Truro Leisure centre.

Wheal Jane Meadows

£585,000 Freehold

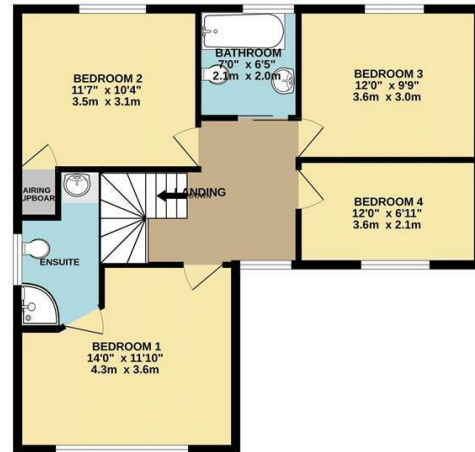


- Four bedroom family house
- Extended
- Refitted family bathroom and en-suite
- Driveway parking
- Mains gas central heating
- Significantly upgraded
- Professionally refitted kitchen
- Integral garage with electric door
- Front and rear gardens with cabin
- Double glazing

GROUND FLOOR
845 sq.ft. (78.5 sq.m.) approx.



1ST FLOOR
654 sq.ft. (60.7 sq.m.) approx.



TOTAL FLOOR AREA : 1499 sq.ft. (139.2 sq.m.) approx.

Whilst every attempt has been made to ensure the accuracy of the floorplan contained here, measurements of doors, windows, rooms and any other items are approximate and no responsibility is taken for any error, omission or mis-statement. This plan is for illustrative purposes only and should be used as such by any prospective purchaser. The services, systems and appliances shown have not been tested and no guarantee as to their operability or efficiency can be given.
Made with Metropix ©2024

Council Tax Band E

Local Authority

Agents Note: Whilst every care has been taken to prepare these particulars, they are for guidance purposes only. All measurements are approximate and are for general guidance purposes only and whilst every care has been taken to ensure their accuracy, they should not be relied upon and potential buyers/tenants are advised to recheck the measurements.

Energy Efficiency Rating		
	Current	Potential
Very energy efficient - lower running costs		
(92 plus) A		
(81-91) B		
(69-80) C		
(55-68) D		
(39-54) E		
(21-38) F		
(1-20) G		
Not energy efficient - higher running costs		
England & Wales	EU Directive 2002/91/EC	

31 Lemon Street
Truro
Cornwall
TR1 2LS



CLIVEPEARCE
Now you're moving

hello@clivepearceproperty.com

01872 272622

www.clivepearceproperty.com